



2/13/2020

AFTERNOON PICK-UP:

Reminder to please park in the designated parking spots at the side of the building. Wait for your child to come out of the building and come to your car. Do not park in the curb lane! When you are ready to pull out of the parking spot, *PLEASE* be certain there are no students walking in your path.

Please watch for students walking or riding their bikes to school.

Feb. 13 - 7th and 8th Grade Choir Concert - THS @ 7:00 pm

Feb. 14 & 17 - No School

Feb. 21 - End of 2nd Trimester

Feb. 18 - Cookie Dough Sale Begins - see flyer below*

Feb. 24 - Gamers Club meets after school

Don't miss out on purchasing earbuds to support Model UN - see flyer below*

Sign-ups for Fishing Club has begun, don't miss out - see flyer below*

Yearbook News

Yearbooks are now available for pre-order by completing the order form that was sent home with your student or by ordering on-line. If for some reason your student did not bring home an order form and you would like to have one order forms can be found in the office. If you would like to order on-line please use the following website - ybpay.lifetouch.com - the yearbook ID code is 10975620. As always there will be a LIMITED number of yearbooks available for purchase at the end of the year on a "first come first serve basis" so if you want to guarantee that your students receives a yearbook then pre-ordering is the way to go.

FREQUENT FAMILY DINNERS

<https://preventionactionalliance.org/advocate/newsletters/know-frequent-family-dinners-make-a-big-difference/>

I'm paws-itive you'll love these earbuds!

- Good quality earbuds
- Guaranteed for 30 days
- Get your favorite colors
- Have a backup pair and leave your AirPods at home!



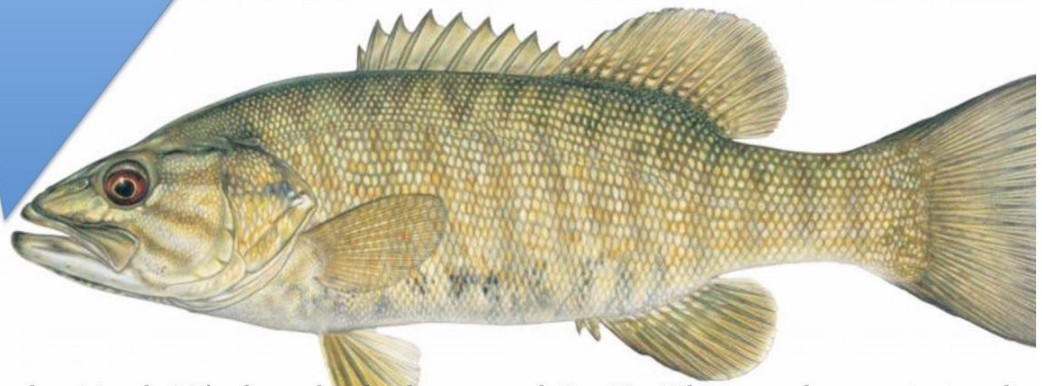
Earbuds For Sale Only \$2.00

**Available in red, pink, blue, yellow,
green, purple, black and white -
while supplies last**

**AVAILABLE IN ROOM 205
OR THE MEDIA CENTER**

All proceeds benefit the Model UN Club

**Join the TMS
Fishing Club Today!
See Mr. Whiteman
for Details!**



First Meeting is Thursday, March 19th after school. If interested, See Mr. Whiteman for permission slip and get them completed and turned in with your \$10 AND Permission Slip to Mr. Whiteman before March 5th (We will be making fishing lures at our first meeting!) Limited to the 1st 20 Students so don't wait until it is too late! Get your \$10 and forms to Mr. W. as soon as possible!

**Know a middle schooler interested in
playing Lacrosse?**



**There Is still time to join the TMS Club
Lacrosse team!**

**Contact Coach Emily Dreisbach at
dreisbea@miamioh.edu for more information**

TMS PTG COOKIE DOUGH SALE

February 18 - March 10, 2020

Next Tuesday, February 18th students will be given a cookie dough sale envelope. It contains a letter, order form, catalog, and collection envelope. The order form and money is due on or before March 10th. This sale is very similar to the Pie Sale that was held in October. Each student that chooses to participate will have their earnings placed into a “travel” account. Students can then withdraw money to pay for a TMS grade level trip, or some other school related trip (ie. band/chorus). Please read the fine print below. . . .

School fundraisers are designed to assist students wanting to travel on class trips. If a student chooses to not travel, all money raised is forfeited to the general scholarship fund. There is also a cap to how much profit a student is allowed to earn. The profit stops at 75.00 past the cost of the Washington, D.C. trip. The extra money will be donated to the general scholarship fund. For example: earn \$700 and the trip cost \$600 -- you keep 75 TMS keeps 25. This rarely happens, but we can't let you pocket 100's of dollars in profit.

The **profit** for this sale is only **40%**, but every little bit helps -- GOOD LUCK!!

INSTRUCTIONS FOR COOKIE DOUGH SALE

- 1- This fundraiser is voluntary. It only benefits your child(ren). **40%** of your total sale will be placed into your child's “travel” account.
- 2- All money is to be collected at the time of the sale. Checks are payable to TMS PTG. Make sure your money matches your order (always double check).
- 3- Make sure **your NAME and GRADE is on your form**. Put form and money in an envelope or ziplock bag and turn into the TMS office before first period. There are no prizes with sale.
- 4- The **last day** to turn in Cookie Dough orders is **MARCH 10**. Cookie Dough delivery will be scheduled for early **April (date TBA) starting @ 3pm** (as soon as the buses leave TMS).
- 5- Turn in both **order form sheets**. I will give one back to you when you pick up your order.
- 6- There are **NO ONLINE ORDERS**. All sales are person to person.

Any questions or concerns should be directed to John Brinck.

Email = brinckj@talawanda.org

Cell = 513-477-9503.

GOOD NEWS = Everything for sale is \$20 - easy math. **BAD NEWS** = You only earn 40% profit - \$8 per sale.

REMEMBER -- This is a voluntary sale. You do not need to participate. Whatever you sell/earn is placed in your account. You are only helping yourself.



INFORMATIONAL PACKET COMING HOME SOON!

7TH-GRADE TRIP

SAVE THE DATE! 5-18-20

- Charter bus up/back
- Students Return by 8 p.m.
- Awesome Zoo Experience
- Pack lunch
- STEM Learning at Cosi
- Dinner after Cosi
- Spaghetti Warehouse
- Big Screen Theater/

**PLEASE HELP !
WE HAVE A
DONORSCHOOSE
PAGE !**



"Every parent should attend this class - starting early is better. It's said there is not a manual on how to raise children. In my opinion, this program and book are the closest I have seen." Former Parent Participant

DO YOU HAVE QUESTIONS ABOUT HOW TO RAISE A CHILD IN TODAY'S WORLD?

Join us this Spring for a life changing opportunity for your family!



An opportunity for parents of school-aged children who would like concrete ideas on how to deal with some of the most difficult parenting questions.



An opportunity for middle and high school students that promotes increasing school performance, reducing disruptive behaviors, as well as improving self-concept and emotional health.

**Talawanda sessions will begin in February
and run for 10-weeks.**

FREE dinner and childcare are available.

Call 513.273.3390 to register!



PublicSchoolWORKS

A Safety & Regulatory Compliance System



Stay Safe Speak UP!

(Remain Anonymous)

Call or go online today to report harassment, threats, suspicious behavior or other concerns which may jeopardize the safety of students, employees or school facilities.

Your message is very important in helping us maintain a safe school environment.

It's easy!

Phone

1.866.listen2me (toll free)

Online

1. Go to www.talawanda.net
2. Click on Health & Safety
3. Click on Safe School Help Online

Report these safety concerns:

- Weapons
- Drugs / Alcohol Abuse
- Suspicious Behavior
- Suicide / Self Abuse
- Problem Relationships
- Sexual Assault
- Fights / Violence / Abuse
- Harassment / Threats
- Theft / Vandalism
- Health Concerns / HIV / AIDS



24/7/365

Available all day, every day,
from anywhere.



online or
1.866.listen2me

TMS BRAVE REWARDS

This year TMS has a new reward system to reward positive behavior - TMS Brave Rewards. The TMS Brave Reward program is replacing the TMS Braves Bucks Program that was previously used as our school's positive behavior reward system.

Students earn positive points through Live School. Students may earn positive points for respect, responsibility, accountability, academic achievement, etc. Teachers also use positive points to reward students for their kindness to others, working together, showing motivation, and for many other successes at TMS.

Students will receive multiple positive points for each of the following achievements:

Daily: Every student will earn 2 positive points daily for attendance. *(added by office staff)*

Weekly: Every student can earn an additional 2 positive points each week for having perfect attendance that week.

At the end of a trimester:

- 10 positive points for Great Grades: 3.5 GPA or higher
- 10 positive points for perfect attendance
- 5 positive points for TMS Hero

Live School allows students to save and view the positive points they earn throughout the school year. Students will have the opportunity to exchange their positive points for Brave Rewards throughout the school year. Past rewards have been activities such as a movie at TMS, a pizza party, bowling at Oxford Lanes, an afternoon at the Oxford Community Park, hiking at Miami's Natural areas, pottery painting at You're Fired, and even a Red's game at Great American Ballpark at the end of the year.

In previous years the Braves Bucks program was sponsored by various grants and donations from local businesses. We would like to thank the following organizations and businesses for helping support the program:

You're Fired
Butler Rural Electric
Oxford Lanes
LaRosa's

We are currently looking for people or businesses to sponsor the Brave Reward program for the 2019-2020 school year. If you would like to be a sponsor this year or know a business owner who might help the program monetarily or by donating raffle prizes, please contact:

Stephanie Aerni, Assistant Principal (513) 273-3307 or aernis@talawanda.org

PARENTS: NEED HELP LOGGING INTO LIVESCHOOL?

<https://parent.liveschoolinc.com/#/login>

Please Email/Call: Stephanie Aerni, Assistant Principal
(513) 273-3307 or aernis@talawanda.org

SIGN UP FOR EMAILS FROM TMS PTG!

- NO COMMITMENT
- NO PARTY PLANNING
- NO COMMITTEE WORK

If EASIER...

*JUST SEND ME
AN E-MAIL!*



**ALL WE ASK IS FOR PARENTS TO DONATE FOOD ITEMS
FOR TEACHER TREATS AND CONFERENCE MEALS.**

We meet 4 to 5 times a year at LaRosa's (free food) to discuss. . .

- school events, ideas for change, etc.
- Ideas for get togethers (ie. Trivia Night)
- Fundraising ideas (ie. hypnotist, kids night at TMS, etc.)

Please fill out the information below and return to TMS or contact
Mr. Brinck by email at brinckj@talawanda.org or by cell 513-477-9503.

Parent(s) name - _____

Student's name(s) + Grade _____

Best email(s) - _____



WRITE CAREFULLY!! WRITE NEATLY !!



OXFORD KINSHIP

Support Group



WHERE:

Oxford United
Methodist Church
14 N. Poplar St.
Oxford, Ohio 45056

WHEN:

Second Tuesday of the
month

TIME:

12:00 - 1:30 PM

**CALL TO CONFIRM
AND RESERVE
YOUR SPOT!
(513) 896-2388**

**FREE CHILDCARE
will be provided.**

Supports offer many ways to fill you Toolbox!

August 13, 2019

Working with Schools

September 10, 2019

Behavior & Discipline

October 8, 2019

Perspective of the Child

November 12, 2019

Understanding Attachment

December 10, 2019

Finding Support

January 14, 2020

Financial Toolbox

February 11, 2020

Guilt, Shame, and Love

March 10, 2020

Your changing Family

April 14, 2020

Tough Starts

May 12, 2020

The Unexpected Role

June 9, 2020

Summer and Respite ideas

**TSD APPROVED
for distribution
not affiliated with TSD**

Contact us for more information about Butler County Educational Service Center programs and services:

400 North Erie Blvd., Suite A • Hamilton, OH 45011 • (513) 887-3710 • www.bcesc.org

TMS EXPRESS MENU



Sandwich Station

Served on Whole Grain Buns
Breaded Chicken , Spicy Chicken, Grilled Chicken
Cheeseburgers and Hamburgers
Soft Pretzels w/ cheese sauce
Nacho Chips w/ cheese sauce

Pizza Wheel

Cheese and Pepperoni Pizza choices daily
Fresh Crispy French Fries
include fruits, veggies* and milk

Fresh Options Cooler

Fresh Veggie Cup
Fruit Cup *(12-28)
Premade Assorted Salads*
Jammer Slammer*
w/ Cheese Stick and goldfish crackers
Yogo W/ cheese stick and gold fish crackers
Cheese crackers and grapes*
Yogurt and Jammer meal include fruits and
veggies* and milk



Hot and Cold Salad Bar

Fresh and crisp salad spring and romaine
blends,
top with a variety of fresh vegetables including
shredded carrots, diced cucumbers, radishes, celery
diced tomatoes and many others
Fresh seasonal fruits available
Many hot vegetables offered everyday
Fresh Sandwich topping bar:
Sliced tomatoes, lettuce, onions and pickles

SNACK SHACK

Smart Snack (USDA regulated Snacks) are offered daily to our Middle School students. The drinks, chips, ice cream and cookies are offered after all students go through the lunch lines. All purchases are applied to lunch accounts unless paid by cash. Funds must be available to purchase snacks!

What makes a lunch:

All entrée choices include 1/2 cup fruit and 1/2 cup vegetable choice, offered in 1/2 cup servings,

Milk is also included.

Entrées often contain 2 items, protein and grain

Only 3 items need to be selected to get the value lunch price.

TAKE ALL 5 FOR THE BEST DEAL IN TOWN!

Hot Breakfast:

Mon: French Toast Sticks
Tues: Pancake on a Stick
Wed: Breakfast Pizza
Thurs: Apple or Cherry
Frudel
Fri: Sausage egg and
cheese Bagel



Sara Chandley: Cafeteria manager
513-273-3385

Lunch Prices: \$2.55

Entrée price: \$2.25

Sides \$.50

Deal of day is lunch with
up to 5 items including milk

Check out our new interactive
web site for detailed nutrition up-
dates.

ALLERGENS LISTED



Beverage Bank

Milk 1% white and chocolate
Fat Free Strawberry Milk
Water
Flavored Water
Assorted 100% Juice Drinks



Talawanda School District
131 W. Chestnut St.
Oxford, Ohio 45056

TALAWANDA SCHOOL DISTRICT



EMERGENCY GUIDE

Talawanda School District
Ed Theroux, Superintendent



In the Talawanda School District, safe and secure learning environments are the first priority:
Students must first feel safe in order to grow academically, socially, and emotionally.

It is important to communicate actions that ensure safe school environments. Every emergency situation is unique in initiation and response so the information in this material is not all inclusive. However, it is intended to provide a better understanding of responses in the event of a crisis or emergency.



TALAWANDA SCHOOL DISTRICT EMERGENCY GUIDE

TIP LINE:
844-SAFEROH

Through partnerships with the Ohio Department of Education and the Ohio Department of Public Safety, every school in Ohio has been registered for SaferOH, a tip line that proactively helps to ensure the safety and well-being of its students.

By calling **1 (844) SAFEROH**, students and adults can share information with district and law enforcement officials regarding threats to school or student safety, such as bullying, suicides, or violence.

Callers may remain anonymous or share their contact information for possible follow-up. The line will accept both calls and texts 24 hours a day, 7 days a week.

LIKE:

Web: www.talawanda.org

FOLLOW:

Twitter: @Talawanda

SHARE:

Facebook: [facebook.com/Talawanda School District](https://facebook.com/TalawandaSchoolDistrict)



An emergency is any unexpected incident that could affect the health or safety of students or employees

... such as a disruption in utilities or a national emergency. Emergencies can affect one child, one school, or the entire school district.

When an emergency occurs, school officials evaluate the seriousness of the situation and determine the best plan of action to respond quickly, safely, and appropriately. Emergency responders such as police, fire, and medical teams are notified and assist as needed.

EMERGENCY RESPONSE

Each Ohio school district has an emergency preparedness plan outlining possible scenarios and responses that vary based on conditions and situations.

The crisis management team, a team in each school that has emergency training, determines the best crisis response. In the event that the response includes an emergency student dismissal, it is important for parents to understand that students will be dismissed to parents once danger has passed.

In any emergency situation it is critically important that school leaders and safety personnel respond quickly. According to law enforcement and safety officials, it is important that parents wait for a call to pick up their children rather than rush to a site. Parents of students in the affected building will receive detailed information as soon as possible.

FOUR COMMON RESPONSE OPTIONS

LOCKDOWN

1 A lockdown may be used in response to an event inside or outside of a building. During a lockdown, students are restricted to their classroom and are not released from the classroom until lockdown procedures have concluded.

SHELTER-IN-PLACE

2 This protective action is enacted when an event takes place outside of the building and officials determine that the safest course of action is to keep students and staff inside the building until the external event is resolved. During shelter-in-place, there could be student movement within the building, but students will not be released from the building until the shelter-in-place procedures have concluded.

EVACUATION

3 If it is unsafe for students and staff to remain inside the building, the building will be evacuated. Students and staff may remain on school grounds until the building is safe to re-enter or may be relocated to a safe location off of school property, depending on a variety of circumstances.

EMERGENCY SCHOOL CLOSING

4 This procedure will take place if your school officials determine students are safer at home than at school or trying to get to school. This most often occurs due to loss of utilities or a weather emergency.

If your school or school district intends to send students home or evacuate from a risky location to safe location, specific information will be communicated to the parents of affected students through a phone call.

RESPONSE TO ACTIVE AGGRESSOR

In Ohio school districts, students and staff in all buildings are trained three times each year in an emergency response process known as ALICE. Most often used in the event of an active aggressor, ALICE empowers students and teachers to ensure their personal safety.

It is important to remember that ALICE is not a linear progression and response action, but is dependent on the individual situation. Decisions are made by teachers and students to ensure their personal safety.

A **ALERT:** Alert students and staff of an active aggressor.

L **LOCKDOWN:** Barricade a locked door with large objects, such as desks, chairs, shelves, etc.

I **INFORM:** Listen for communication, make informed decisions as to what action should be taken.

C **COUNTER:** If confronted by an aggressor, attempt to distract or confuse in order to get away.

E **EVACUATE:** Leave the area if it is unsafe based on all available information and observations.

Student Release Student-Parent Reunification

In the event of an emergency situation during which a parent chooses to remove his/her child from school, or one that requires students to go home, your school district will care for each student until a parent arrives or until it is safe to transport the student home using district school transportation. Be assured that no child will be left alone.

In a **situational student release**, school officials determine that students and staff members need to evacuate a building temporarily but DO NOT need to close school

or dismiss students. Parents who elect to remove students during the time of an evacuation will need to report to a designated area with photo ID to sign out students. Emergency contacts designated for student release by parents may also remove specific students from school with a photo ID. For safety reasons, no other individuals are permitted to take students from a school.

Reunification occurs when school officials determine that students and staff members need to evacuate a build-

ing, close school, and dismiss students. The closing of school may require that the students be relocated to a secondary location. If students are relocated to an off-campus reunification site, a "gated reunification system" will be in place. Parents of emergency contacts will be required to pick up students either on campus or from the secondary reunification location.

In the event of an **evacuation to another location**, Parents of students in the affected building will receive a phone call with detailed information. Evacuation locations are not made public in advance so as not to jeopardize the efficiency or safety of the plan.

Gated Reunification System

Students may only be released to a parent or emergency contact designated for student release. Photo identification is required.

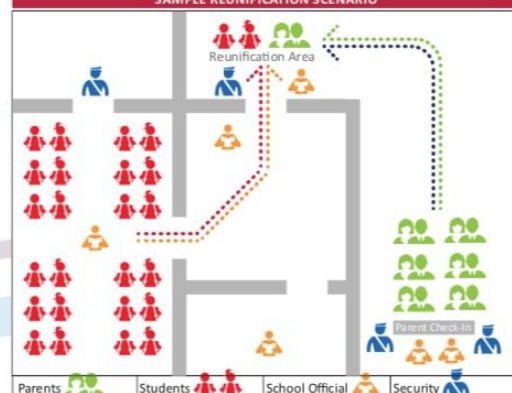
Upon arrival at the reunification site, parents will:

1. Report to the parent check-in area;
2. Complete a reunification card;
3. Be escorted by a staff member to his/her child; and
4. Sign the reunification card to ensure all students are accounted for and safe.

Crisis Response Team

Your district personnel are trained using the **Traumatic Event Crisis Intervention Plan**. TECIP is a school-based framework designed to meet the emotional and psychological needs of students and staff in the aftermath of a traumatic event.

SAMPLE REUNIFICATION SCENARIO



2019-2020 TMS Clubs/Activities

Art Club

Advisors: Gary Robertson - robertsong@talawanda.org

Description:

This club is all about art! We look at art, talk about art, and most importantly make art. The TMS Art Club is supported by the Oxford Community Arts Center and we collaborate with local artists. We will spend several meetings learning about and making artwork around a central theme. Last year we made peace polls that were auctioned at the Community Arts Center, designed and created masks, and self-published a botanical illustration book with illustrations contributed by club members. Projects for this year will be developed with member input. All students are welcome. We will meet every other week (dates to be determined) for approximately 90 minutes.

Brave Initiative Team

Advisor: Amy Macechko - macechkoa@talawanda.org

Description:

The Brave Initiative Team is sponsored by the Coalition for a Healthy Community - Oxford Area and is the middle school segment of the Youth Action Team for a Healthy Oxford Area. This group of students focuses on building leadership skills and promoting the value of living a drug-free lifestyle. Through the promotion of positive messaging and working with students at Talawanda High School and Miami University, these students are the voice of substance use prevention for their peers. We meet during lunch periods and some after school/evening meetings are also scheduled. All students are welcome!

Builders Club

Advisors: Amy Macechko and Molly Todd - macechkoa@talawanda.org, toddm@talawanda.org

Description:

Builders Club is part of the Kiwanis Organization. Members of Builders Club are involved in the school and the community as service leaders. Some community service projects the TMS Builders Club has been a part of in the past are Kiwanis Pancake Day and Kiwanis Food Drive. Students have also had the opportunity to be leaders in service projects at TMS. Builders Club is open to all students. Builders Club meets the 1st and 3rd Monday of every month.

Chess Club

Advisor: Laura Jewett - jewettl@talawanda.org

Meeting Day and Time: During tutorial

Description:

Students of all ability levels with an interest in playing chess can join chess club. Weekly matches are arranged by the advisor and the year culminates with a single-elimination tournament. Chess club will begin in October.

Craft Club

Advisors: Cherie Day and Carolyn Ratliff - dayc@talawanda.org, ratliffc@talawanda.org

Description:

Do you like to meet new people and enjoy hands-on projects? Join us for meetings twice/month after school until 3:45 (dates to be determined by members) for fun and creativity! Projects will be determined by club members and all middle school students are welcome.

Destination Imagination

Advisors: Shana Rosenberg - di@talawanda.org

Description:

DI is a STEAM (STEM + the Arts!) activity open to all kindergarten through 12th grade students. Students form teams of up to 7 members, select one of 7 challenges created each year, and work together to develop a solution that will be presented at the regional tournament taking place at the end of February. Each team needs at least one Team Manager (often a parent or teacher) who helps keep the team on track. Most teams start meeting weekly, at most, in September or October.

FCCLA

Advisor: Sharon Gregory - gregorys@talawanda.org

Description:

Family, Career and Community Leaders of America (FCCLA) is a dynamic and effective national student organization that helps young men and women become leaders and address important personal, family, work and societal issues through Family and Consumer Sciences Education and is open to students grades 7-12 who have had at least one FCS/Life Skills class and pays the \$25.00 dues.

FCCLA: The Ultimate Leadership Experience is unique among youth organizations because its programs are planned and run by members. It is the only career and technical in-school student organization with family as its central focus. Participation in national programs and chapter activities helps members become strong leaders in their families, careers and communities.

FCCLA members from the high school along with the adviser will be meeting with TMS students once a month here at TMS. Students have the opportunity to participate in service projects, fundraising, leadership activities, trips, and competition throughout the school year.

Gamers Club

Advisors: Kelly Case and Tracy Vu - casek@talawanda.org, vut@talawanda.org

Description:

Calling all tabletop game fans! Do you love to play board games and/or card games? Looking for a place to try out the new Magic deck you just put together or a place to trade Pokemon cards? Want to test a new chess strategy? Maybe you are looking to join a dungeons and dragons campaign, but don't know where to start? Then this is the place for you. Once a week, TMS will have a place for you to do all things tabletop. See Mrs. Vu or Mrs. Case for details and be watching out for announcements. We plan to start in mid-September.

Garden Club

Advisors: Amy Clay and Lindsey Krause - claya@talawanda.org, krausel@talawanda.org

Description:

Do you love being outside? Are you interested in gardening and the environment? Have you ever thought about growing your own food? Join the TMS Garden Club! Let's get our garden going, have some fun with your friends, and enjoy watching our seedlings grow! We will be cleaning out the garden and starting some fall crops to share. Time and date TBA

Guitar Club

Advisors: Raj Sundram - sundramr@talawanda.org

Description:

Have you ever wanted to be able to play your favorite songs, show off your mad shred skills or simply write your own music? Guitar Club is the stepping stone for you! Students will meet two to three times a month TUESDAY FROM 2:45- 3:45 to learn simple, intermediate and advanced songs, scales and concepts. A personal guitar, electric or acoustic, is not a must, but having your own will always expedite your progress. All are welcome, be ready to practice and to play!

K'NEX Competition

Advisors: Mary Ruppert and Larry Brock - ruppertm@talawanda.org, brockl@talawanda.org

Description: This competition is provided by Thermo Fisher. Students are given a STEM Design Challenge. Last year's challenge was "to make the world healthier by treating cancer." Students were to create a nano-machine that could capture and treat a cancer cell or tumor of the team's choice. The prototype is constructed from K'NEX materials provided by Thermo Fisher. Team members need to research and demonstrate how their machines or prototypes work. We will be given the STEM Design Challenge in January and have one month to be ready to present our research and prototypes.

MathCounts

Advisor: Lori Gloeckner - gloecknerl@talawanda.org

Meeting Day and Time: Thursdays after school until 3:45 Meetings usually start in mid-September.

Description:

MathCounts is a national middle school mathematics competition program that builds problem solving skills and fosters cooperative work and math achievement.

Peer Mediation

Advisor: Laura Jewett - jewettl@talawanda.org

Meeting Day and Time: During tutorials (no after school meetings)

Description:

Peer mediators assist other students with working through and resolving conflict. Students are trained as peer mediators and assist others in solving problems at school. 8th Grade Mediators can also become members of the SAVE Club (Students Against Violence Everywhere) and/or become Peer Support Volunteers helping younger students resolve social or academic concerns.

Polar Brrrave

Advisors: Paul Stiver - stiverp@talawanda.org

Description:

Polar Brrrave (think brrrrrrrr!) is a running club that will meet twice a week starting after Thanksgiving Break to keep students active and running. Anyone in grades 6-12 may participate. We will start after the break and run through December and January when school is in session. We will run outside, so bundle up!!

Student Council

Advisor: John Brinck - brinckj@talawanda.org

Meeting Day and Time: Typically 2x a month after school until 3:30 (Tuesdays)

Description:

Students run for grade level representative and are elected by their peers. Student Council represents TMS and students are able to fundraise and organize events for TMS. Student Council has sponsored the 8th grade school dance, the Thanksgiving Senior Citizen Luncheon, Veteran's Day activities, Staff Appreciation, and many more.

Activities

Band - Mr. Gonzales: gonzalesr@talawanda.org

Chorus and Bel Canto - Mrs. Case: casek@talawanda.org

Orchestra - Mrs. House-Shumway: shumwayc@talawanda.org

Sports

Questions about TMS sports contact Mrs. Klenk: klenke@talawanda.org

Football, Cheerleading, volleyball, Cross Country, Boy's Basketball, Girls Basketball, Wrestling, Track

**Activities/clubs will only occur based upon the availability of a sponsor/supervisor*